



LED LAMPS

ProLED[®] JC BA15s (Bayonet) Series



Energy Saver



Omnidirectional



IP65 Rated

20 times the life and 88% more efficient than a 20W Halogen JC



IP65 Rated Options for Outdoor Use

10-18V Range Eliminates Voltage Drop Calculation

20-Year Lamp Warranty if Installed in Sollos Fixtures (for IP65 Rated Versions)

Applications:

- Landscape
- Accent
- Display
- Hospitality
- Retail

Markets:

- Outdoor
- Commercial
- Residential



Contact Your Customer Care Specialist For Pricing, Orders And Technical Support.

800.677.3334 www.halcolighting.com

ProLED[®]

JC BA15s (Bayonet) Series

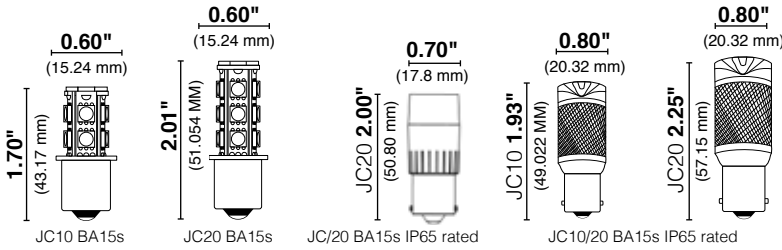
Product #: _____ Type: _____

Project: _____ Date: _____

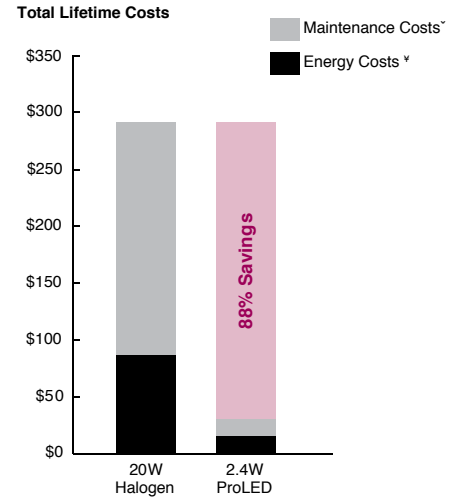
Comments: _____ Initials: _____

Specifications

- JC10 & JC20 with BA15s (Bayonet) bases
- Available in 3000K CCT
- 82 CRI for quality and consistent color rendering
- 5-Year Limited Warranty on IP65 Rated and 2-Year on standard 20,000 hour lamps



Savings Comparison



¶ Maintenance costs based on 15 minutes at \$40 per/hr
 ¥ Energy costs based on \$0.11 kWh

Ordering Information

Watt	Base	Product #	Product Code	Description	Volts	Color Temp.	CRI	Lumens	Useful Life*	Pkg. Qty.	MOL	Equivalent Wattage	
JC10													
1.5	BA15s	80692	JC10/1WW/BA15S/LED	Omnidirectional	10-24	3000	82	150	30,000	1/40	1.70"	10	
1.5	BA15s	80810	JC10/1WW/BA15S/LED2	IP65 Rated	10-18	3000	82	100	40,000	1/10	1.93"	10	
JC20													
2.4	BA15s	80691	JC20/2WW/BA15S/LED	Omnidirectional	10-24	3000	82	250	30,000	1/40	2.01"	20	
⊗	2.3	BA15s	81100	JC20/2WW/BA15S/LED2	IP65 Rated	10-15	3000	82	250	40,000	1/10	2.00"	20

NEW ITEM

* Useful Life is defined as the point in time at which the lamp will maintain at least 70% of its initial lumens. The lamp will continue to burn past this point, but at decreased light levels.
 Warranty - Commercial / Industrial: IP65 Rated JC lamps backed by a 5-Year Limited Warranty from the date of purchase; standard JC lamps backed by a 2-Year Limited Warranty from date of purchase.
 May not be compatible with all electronic transformers.
 Not for use in enclosed fixtures. Suitable for use in sealed metal landscape fixtures; standard JC lamps require protection from elements.
 Energy savings of 88% based on \$0.11 kWh over the life of the ProLED lamp.
 IP65 rated lamps are rated for use outdoors where exposed directly to water from rain or irrigation. The lamp is not submersible nor for use in enclosed fixtures. Suitable for use in sealed metal landscape fixtures.



This lamp can be used in Sollos Landscape Lighting products

solloslighting.com